



Wasco Part of

VELUX® Commercial

Commercial and Residential Portfolio

Daylighting solutions for better living and working environments

Creating limitless possibilities with fully customizable daylighting systems for happier, healthier living and working environments.

For more than 80 years, generations of architects, contractors, and building owners have trusted Wasco's innovative designs and time-tested quality to naturally brighten hospitals, schools, offices, hotels, and manufacturing facilities.

Education	2
Healthcare	16
Hotels and Conference Centers	24
Retail and Shopping Malls	30
Offices	44
Public Buildings	50
Airports and Railway Stations	62
Sports Facilities	66
Residential	72

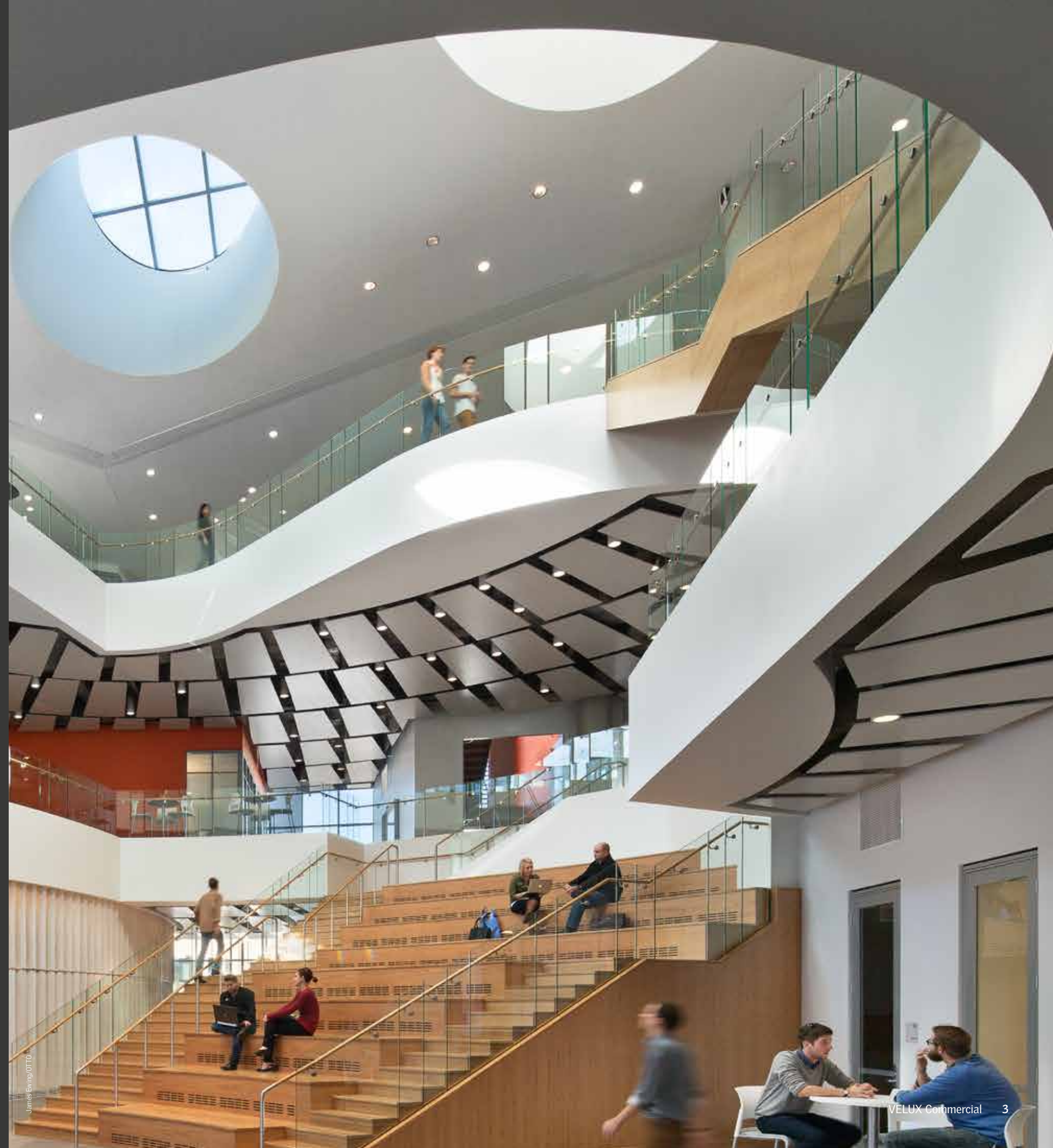


© Laura Swimmer



Education

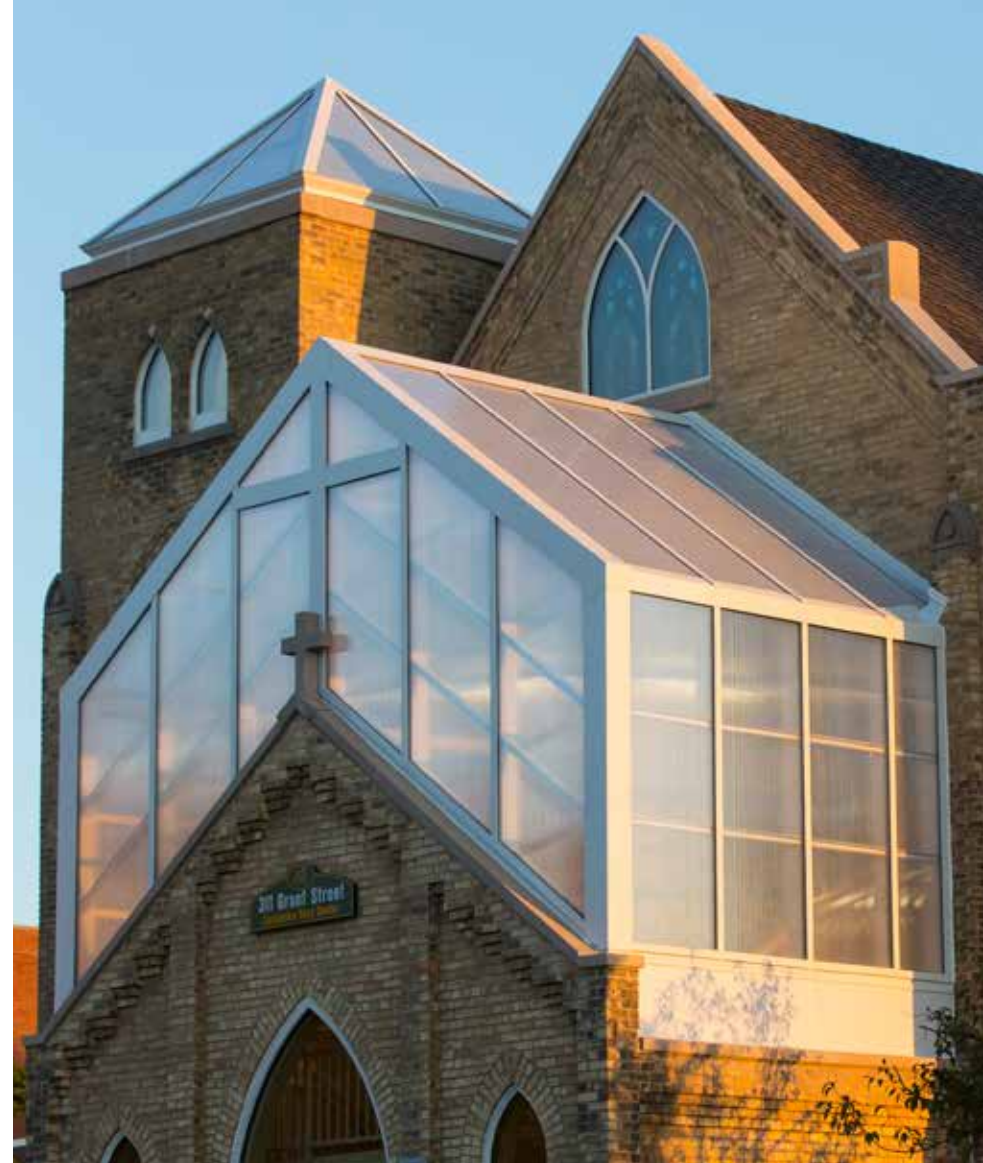
Properly applying skylights into educational buildings can provide energy savings over time while improving student performance.





University of Missouri-Kansas City Henry W. Bloch Executive Hall
 Kansas City, MO
 Architects: BNIM, Moore Ruble Yudell
 Three Circular Hurricane Single Pitch Pinnacle 600, 12'4", 30°-40° Pitches.

James Ewing/OTTO



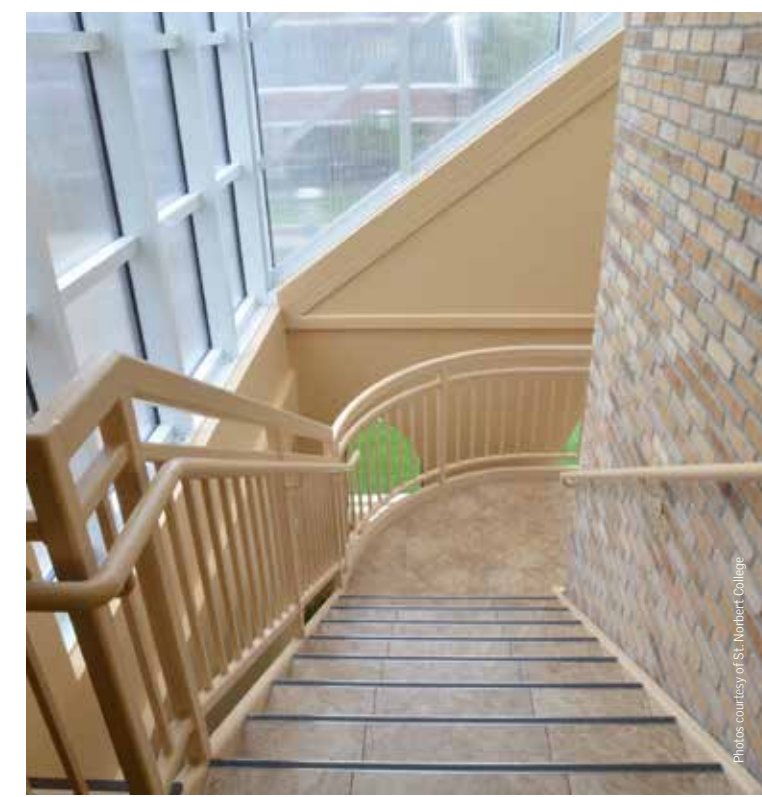
Cassandra Voss Center, St. Norbert College
 De Pere, WI

Architect: Performa

Bell Tower: Horizon S-Series, 8' x 8' Pinnacle
 350 Framing System, 12:12 Pitch. Glazing:
 16mm Polycarbonate Panels Filled with Lumira®
 Aerogel. Finish: Kynar Bone White.

Atrium Roof: Horizon S-Series, Pinnacle 600
 Framing System, Double Pitch. Glazing: 25mm
 Polycarbonate Panels Filled with Lumira®
 Aerogel. Finish: Kynar Bone White.

Atrium Walls: Horizon V-Series. Glazing: 25mm
 Polycarbonate Panels. Finish: Kynar Bone White.



Photos courtesy of St. Norbert College



UMass Design Building
Amherst, MA

Architect: Leers Weinzapfel Associates, Boston, MA
Two Pinnacle 350 Trapezoid Pyramids, (1) 7'1" x 15'3" and 15'11", (1) 7'2" x 16'4" and 17'1". Finish: Medium Bronze Anodize.

Judith A. Resnick Elementary School
Gaithersburg, MD

Architect: Michael Shpur

Horizon S-Series, Pinnacle 350 Framing System, Double Pitch, 16'4" x 99'2", 8:12 Pitch. Glazing: 25mm Clear over 16mm Opal Polycarbonate. Vertical ends glazed with glass. Finish: Bone White Kynar 500.



University of Minnesota, O. Meredith Wilson Library
Minneapolis, MN

Architect: Miller Dunwiddie Architecture, Inc.

Classic System Square Pyramids, 6'10", 7:12 Pitch. Finish: Silver Metallic.



French Elementary School

Spring, TX

Architect: PBK

Horizon S-Series, Pinnacle 600 Framing System, 12 Sided Polygon Pyramid, 22', 4:12 Pitch. Glazing: 25mm Opal IR Multiwall Polycarbonate. Finish: Clear Anodize.

Horizon S-Series, Pinnacle 350 Framing System, Pyramid, (4) 9', (7) 16', 4:12 Pitch. Glazing: 25mm Opal IR Multiwall Polycarbonate. Finish: Clear Anodize.





Convent of the Visitation
Mendota Heights, MN

Architect: Opus AE Group, LLC

Horizon C-Series Canopy, 25' x 28'.

Glazing: 20mm Clear Standing Seam Multiwall Polycarbonate. Finish: Kynar Sandstone.

Clayton High School Recreation Center
Clayton, MO

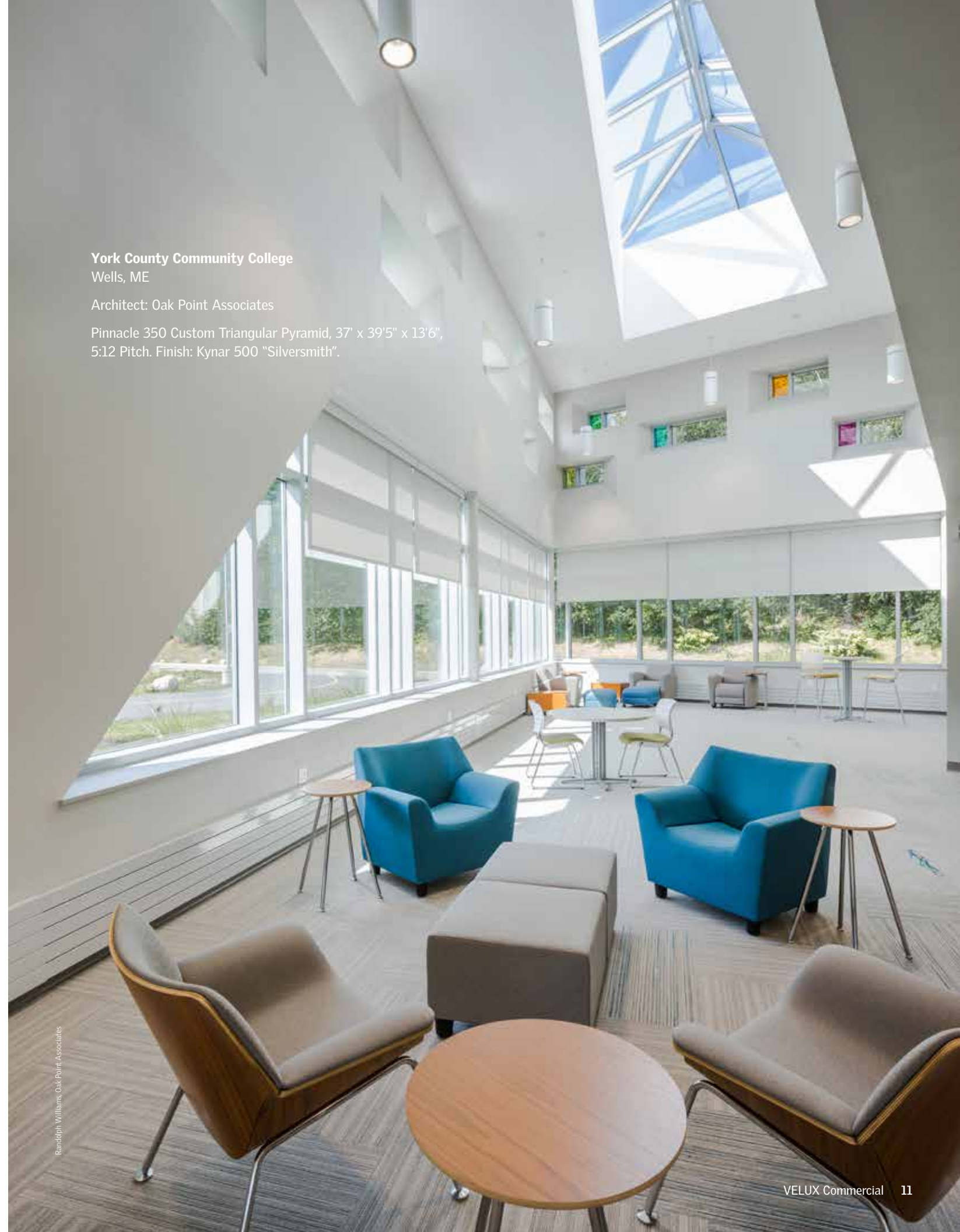
Horizon S-Series, Pinnacle 350 Framing System, Double Pitch,
(4) 9'6" x 42', 5:12 Pitch. Glazing: 25mm Clear Multiwall
Polycarbonate Filled with Lumira® Aerogel. Finish: Mill.



York County Community College
Wells, ME

Architect: Oak Point Associates

Pinnacle 350 Custom Triangular Pyramid, 37' x 39'5" x 13'6",
5:12 Pitch. Finish: Kynar 500 "Silversmith".

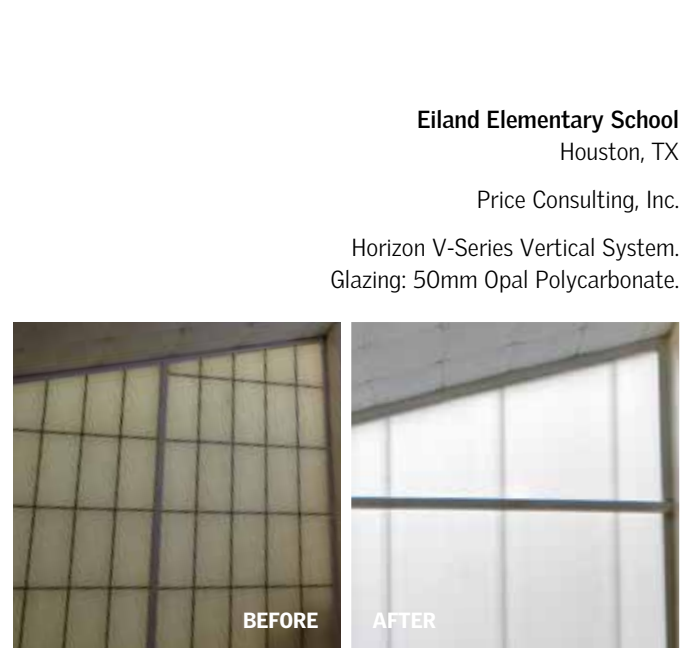




Hillpoint Elementary School
Suffolk, VA
RRMM Architects
Double Pitch, 7' x 57' 7", 8:12 Pitch. Finish: Kynar Bone White.



Stephen F. Austin Middle School
San Juan, TX
Architect: Gignac Associates
Horizon C-Series, Single Slope Canopy.
Glazing: 20mm Green Standing Seam
Multiwall Polycarbonate.

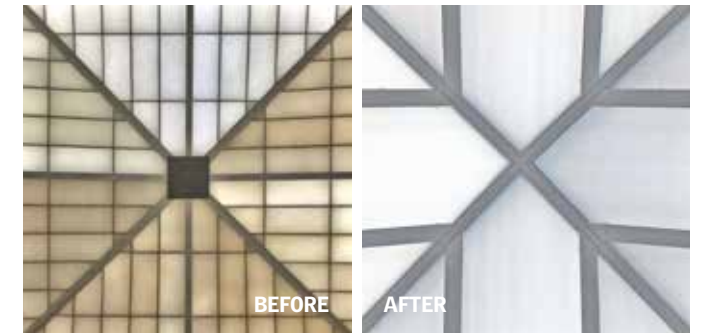


Eiland Elementary School
Houston, TX
Price Consulting, Inc.
Horizon V-Series Vertical System.
Glazing: 50mm Opal Polycarbonate.



University of Minnesota School of Business
Duluth, MN

Reglaze of Triangular shaped Pyramid.
Horizon S-Series. Glazing: 25mm Bronze
Polycarbonate with Lumira®
Aerogel Fill.



High School
Harris County, TX

Price Consulting, Houston, TX

Sixteen Horizon S-Series Pyramids, 9' x 9',
6:12 Pitch. Glazing: 25mm Opal over 16mm Opal Multiwall
Polycarbonate. Finish: Kynar 500 Bone White on Frames.



Old Dominion University Dining Facility
Norfolk, VA

Pinnacle 600 Sixteen-Sided Polygon Pyramid, 26'9".
Finish: Clear Anodize.



Healthcare

Natural light has been shown to expedite healing and improve overall personal health.





Houston Methodist, The Woodlands Hospital
The Woodlands, TX

Architect: Page

Pinnacle 600 Structural Ridges, (1) 96' x 44',
(1) 85' x 35', (1) 53' x 44', All 6:12 Pitch.
Finish: Kynar 500 Valspar Classic #2 Bright Silver.



WVU Healthcare, Ruby Memorial
Morgantown, WV

IKM Incorporated, Architects

Pinnacle 600 Double Pitch, 18'5" x 54'8",
3:12 Pitch. Finish: Clear Anodize.

Pinnacle 600 Lean-To, 11'2" x 52'9",
2:12 Pitch. Finish: Clear Anodize.



Photos courtesy of IKM Incorporated, Architects



South Georgia Medical Center
Valdosta, GA

Perkins + Will

Horizon C-Series Canopy System. Single Pitch, 51'6" x 25'4". Glazing: 20mm Opal Standing Seam Multiwall Polycarbonate.



Magnolia Regional Health Center
Corinth, MS

Earl Swenson Associates

Horizon C-Series Canopy. Single Slope, (2) 132' x 20', (1) 40' x 7', 2:12 Pitch. Glazing: 20mm Opal Standing Seam Multiwall Polycarbonate. Finish: Kynar Quaker Bronze.



North Fulton Hospital
Roswell, GA

Rick Stewart & Associates

Horizon S-Series, Pinnacle 600 Framing System, Double Pitch, 24' x 48', 4:12 Pitch. Glazing: 25mm Bronze Multiwall Polycarbonate. Finish: Dark Bronze Anodize.



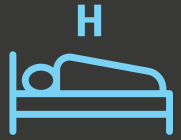
Methodist Hospital
Omaha, NE
HDR Architects, Inc.
Horizon C-Sereis Segmented Radius
Canopy, 29' x 123'. Glazing: 20mm
Bronze Standing Seam Multiwall
Polycarbonate. Finish: Clear Anodize.



Houston Methodist Medical Office Building
The Woodlands, TX
Architect: Page, Houston, TX
Pinnacle 600 Structural Ridge,
24'4" x 37'6", 6.25:12 Pitch.
Finish: Custom Kynar 500 Polar White.



Highlands Oncology Group
Rogers, AR
Core Architects, Inc.
Horizon S-Series, Pinnacle 350 Framing
System, Double Pitch, 14'8" x 25'8",
4:12 Pitch. Glazing: 25mm Multiwall
Polycarbonate Filled with Lumira Aerogel.
Finish: Kynar 500 Bone White.



Hotels and Conference Centers

Natural light and outdoor views make spaces appear larger and create a calming, relaxing environment.





Embassy Suites
 Secaucus, NJ
 Double Dome Barrel Vaults, (17) 72' x 6' - 52'.
 Glazing: Bronze over Clear Acrylic. Finish: Mill.



MIAMI-DADE COUNTY
 AFFRATED

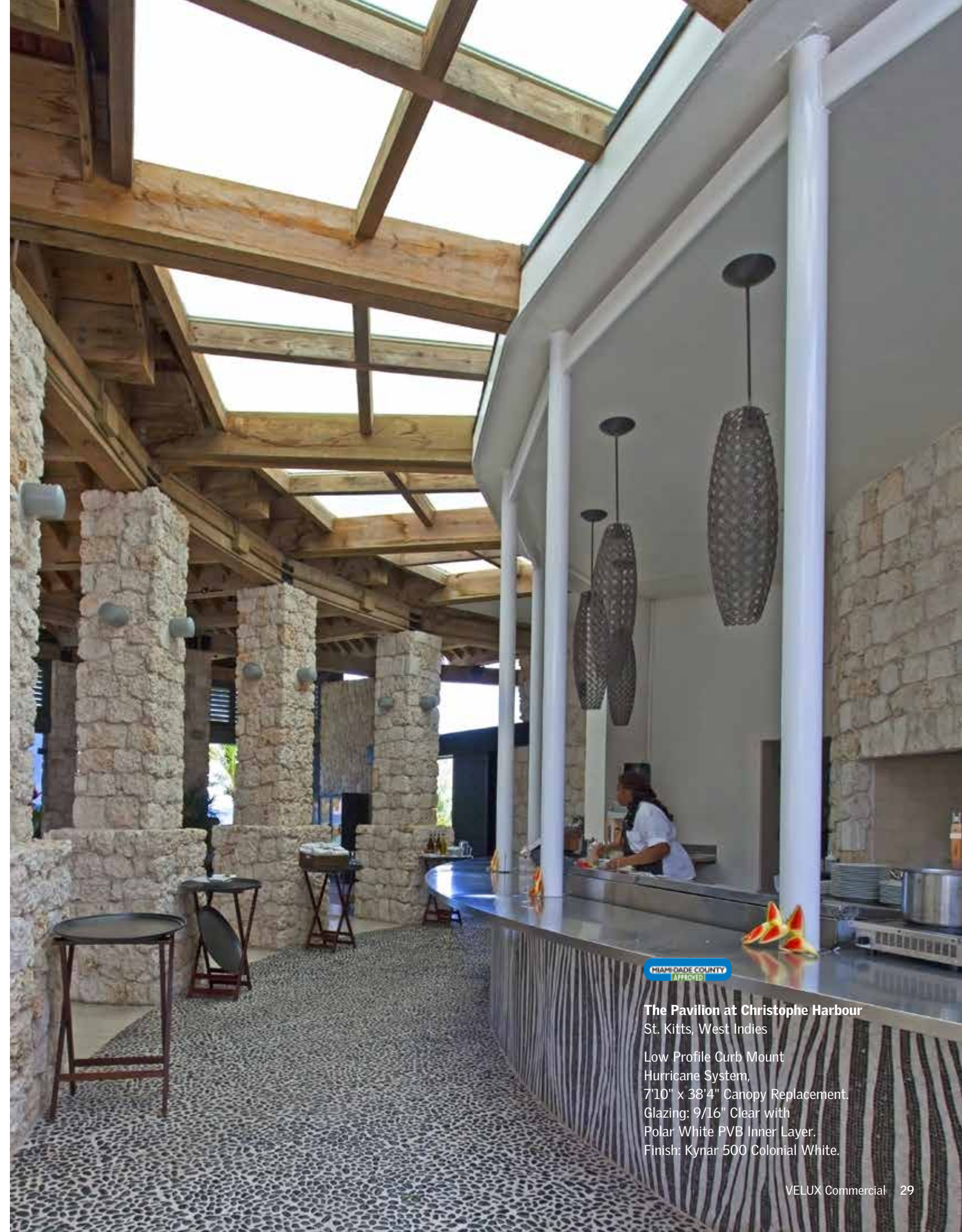
Contessa at Bay Colony
 Naples, FL
 JRL Design
 Hurricane Pinnacle 600 Square
 Pyramid, 20'6", 12:12 Pitch. Glazing:
 Gray Tinted. Finish: Kynar Bone White.



Avista Resort
 North Myrtle Beach, SC
 Glass Canopy, Pinnacle 350
 Single Pitch, 13'9" x 60'.
 Finish: Kynar Bone White.



Embassy Suites
 Hunt Valley, MD
 Contractor: MEI
 Pinnacle 900 Double Pitch,
 29 x 59, 7:12 Pitch.
 Finish: Dark Bronze Anodize.



MIAMI-DADE COUNTY APPROVED
The Pavilion at Christophe Harbour
 St. Kitts, West Indies
 Low Profile Curb Mount
 Hurricane System,
 7'10" x 38'4" Canopy Replacement.
 Glazing: 9/16" Clear with
 Polar White PVB Inner Layer.
 Finish: Kynar 500 Colonial White.



Holiday Inn
 Eau Claire, WI
 Progressive Building Systems
 Horizon C-Series Canopy. CL Rafters
 32' x 32'. Glazing: Horizon 20mm
 Green Standing Seam Polycarbonate.
 Finish: Kynar Bone White.



Retail and Shopping Malls

Skylights in retail have been found to create a positive experience for shoppers, leading to significantly higher sales.





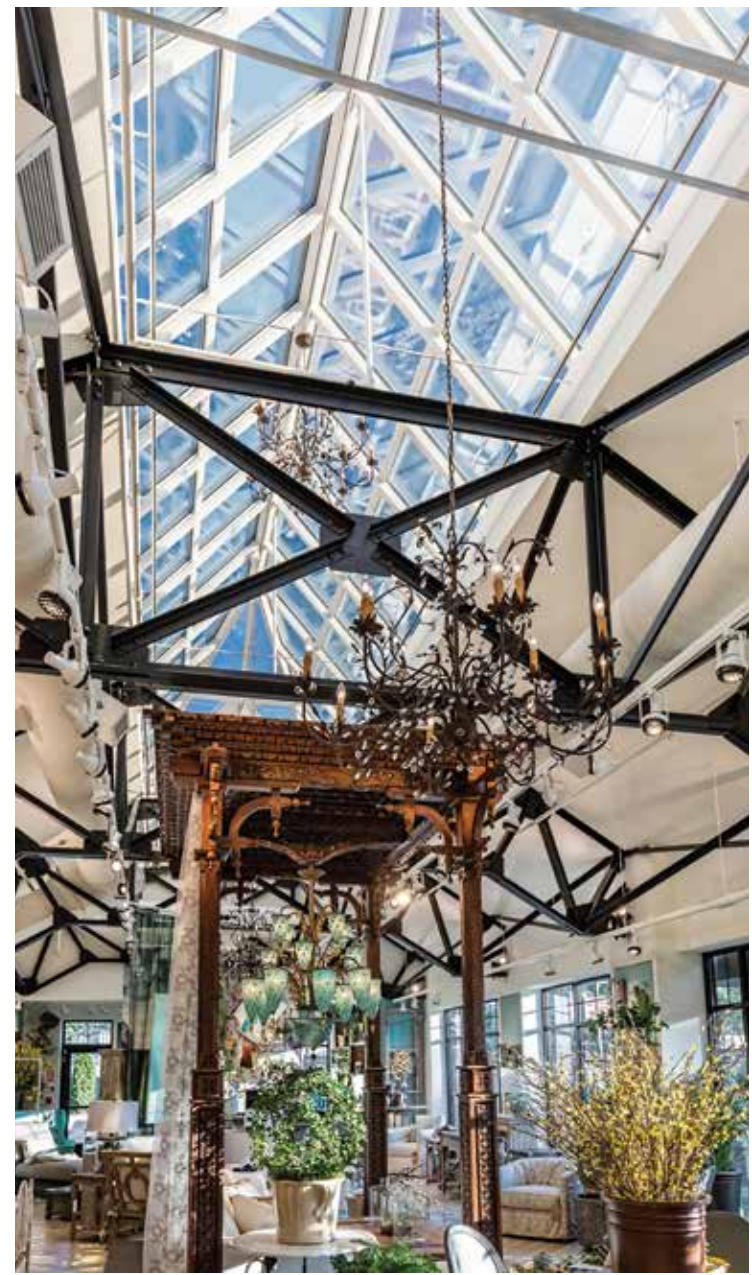
Paramus Park Mall
 Paramus, NJ
 Pinnacle 350 Single Pitch,
 (1) 100' x 60', (1) 160' x 42',
 3:12 Pitch. Finish: Clear
 Anodized Exterior, Kynar
 Bone White Interior.

The best orthopedic
 care is now in the
 best neighborhood
 Yours.



Photos © Julie Legga Photography

Arhaus Furniture – Manhasset
 Roslyn, NY
 RDL Architects, Inc
 Pinnacle 350 Custom Extended Pyramid and
 Structural Ridges, 64' x 10'. Glazing: Bronze Reflective.
 Finish: Kynar Bone White.





2841 Magazine Street
 New Orleans, LA
 Architect: Albert Architecture
 Hurricane Pinnacle 350 Ridge Unit, 13' x 24'
 Finish: Kynar 500 Bone White.

MIAMI-DADE COUNTY
 APPROVED



Cordova Mall
 Pensacola, FL

Hurricane Pinnacle Pyramid, 25' x 25',
 7:12 pitch. Glazing: IG with Hurricane
 Interlayer. Finish: Clear Anodized.

MIAMI-DADE COUNTY
 APPROVED



The Peoples Bank
 Eatonton, GA

Horizon S-Series, Pinnacle 350 Framing
 System, Twenty-Sided Polygon Pyramid, 21',
 4:12 Pitch. Glazing: 25mm Opal IR Multiwall
 Polycarbonate. Finish: Dark Bronze Anodized.



Giordano's
 Las Vegas, NV

Pinnacle 350 Custom Vault, 108' x 20'. Finish:
 Custom Kynar 500 to Match Sherman Williams
 Black Fox #7020.

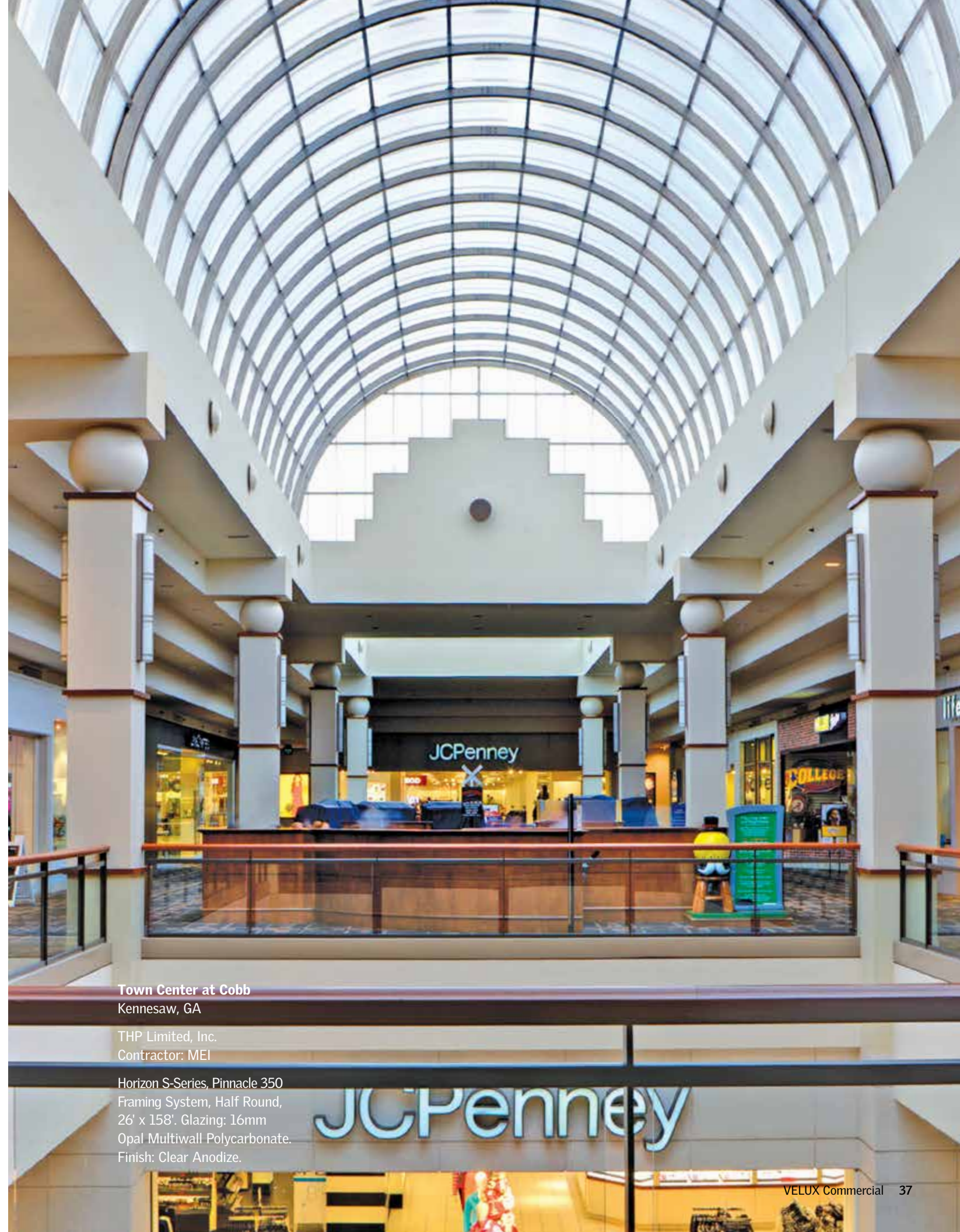




Twin Cities Premium Outlets
Eagan, MN

Architect: Dalpos Architects & Integrators

Pinnacle 350 Structural Ridges, (4) 13' x 50' and (6) 13' x 60',
4:12 Pitch. Finish: Kynar 500 Colonial Gray.



Town Center at Cobb
Kennesaw, GA

THP Limited, Inc.
Contractor: MEI

Horizon S-Series, Pinnacle 350
Framing System, Half Round,
26' x 158'. Glazing: 16mm
Opal Multiwall Polycarbonate.
Finish: Clear Anodize.

JCPenney



Urban Outfitters
 Charleston, SC
 Pompei AD, Architects
 Single Pitch, 15' x 47',
 3:12 Pitch. Finish: Mill.



Ingles Store
 Chesney, SC
 Little & Associates
 Deck Mount Units, 60" x 60", 14" Curbs.
 Glazing: Pyramid Clear Acrylic over
 16mm Multiwall Polycarbonate Panels filled with
 Lumira® Aerogel. Finish: Mill.
 Horizon C-Series Low Rise Vault, 15' x 24'.
 Glazing: 20mm Opal Standing Seam
 Multiwall Polycarbonate.





Rockaway Town Center
Rockaway, NJ

THP Limited, Inc.
Contractor: MEI

Horizon S-Series, Pinnacle 600
Framing System, Single Pitch,
49' - 99' x 105'. Glazing: 25mm
Clear Multiwall Polycarbonate.
Finish: Clear Anodize.



MIAMI-DADE COUNTY
APPROVED

The Gap
Miami Beach, FL

Touzet Studio Design & Architecture

Hurricane Pinnacle 350 Octagonal
Pyramid, 11' Across Flats, 5:12 Pitch,
Finish: Custom Kynar 500 New Bronze.



MIAMI-DADE COUNTY
APPROVED

First American Bank
Baton Rouge, LA

Customer: Louisiana Glass

Hurricane Pinnacle Square
Pyramid, 12', 7:12 Pitch.
Finish: Clear Anodize.



Apple Tree Honda
Fletcher, NC
EcoSky Deck Mount Units, 60" x 60",
18" Curbs. Glazing: Satin Sky® over Clear
Acrylic. Finish: Mill.



Rice Toyota
Greensboro, NC
Horizon S-Series, Classic Framing
System, Double Pitch, 13' x 5', 5:12
Pitch. Glazing: 25mm Opal Multiwall
Polycarbonate. Finish: Clear Anodized.



Whole Foods Market
Glen Allen, VA
Classic System Square Pyramid, 8',
5:12 Pitch. Finish: Clear Anodize.



Offices

Natural light has been shown to decrease absenteeism and increase productivity.





Urban Outfitters Building 18
Philadelphia, PA

Architect: MSR Architecture

Pinnacle 350 Structural Ridge: 22' x 340', 22' x 106', 22' x 148'.
Finish: Kynar 500 Quaker Bronze.

Pinnacle 350 Double Pitch: 10' x 20', 11' x 26', 11' x 14'.
Finish: Kynar 500 Sandstone.

© Laura Swimmer



Halliburton Oak Park
Houston, TX

Gensler
Harvey Builders
Rob Pelletier Construction

Horizon S-Series, Continuous Vault with
Vertical Ends, 17' x 501', 50% Rise.
Glazing: 20mm Clear IR Standing Seam
Multiwall Polycarbonate.
Finish: Kynar 500 Bone White.





600 Concourse
 Jackson, MS
 Barlow Eddy Jenkins
 Pinnacle 600 Double Pitch, 23' x 33'.
 Finish: Kynar 500 Bone White.



CLEAR



FULL TINT

Equity Trust Company
 Westlake, OH

Architect: Vocon Partners, LLC
 Contractor: Carroll Glass

Pinnacle 900 Double Pitch.
 Glazing: Solar Blue over Clear HS Laminated with
 Clear PVB Interlayer. Finish: Clear Anodize.



BEFORE

AFTER



U.S. Naval Academy's MacDonough Hall
 Philadelphia, PA

Architect: Architecture Inc.; General
 Pinnacle 900 Lean-To, 20' x 280'.
 Glazing: Electrochromic Glass.
 Finish: Kynar 500; Exterior Colonial Gray,
 Interior Bone White.



Public Buildings

Natural light will not only help reduce energy consumption, it can also improve working conditions for employees and positively impact visitors.



Photo courtesy of Munson-Williams-Proctor Arts Institute



**Munson-Williams-Proctor Arts
Institute's Museum of Art**
Utica, NY

Architect: Philip Johnson

Barrel Vaults with Vertical Ends, (11) 4'
x 51'. Glazing: OP3 UV Absorbing Clear
Acrylic over White. Finish: Mill.

Photo courtesy of Munson-Williams-Proctor Arts Institute



Levy Park Canopy
Houston, TX

Natalye Appel & Associates

Curb Mount Circular Units: (10) 36", (6) 48", (4) 60".
Glazing: Clear over White Acrylic. Finish: Clear Anodized.





Playland Ice Casino
 Rye, NY
 General Contractor: MILCON Construction Corp.
 Horizon S-Series Lean-To, 12' x 625', 5:12 Pitch.
 Glazing: 20mm Opal Standing Seam Multiwall Polycarbonate. Finish: Kynar 500 Bone White.



Detroit Zoo, Great Ape Exhibit
 Detroit, Michigan

Contractor: DeMaria Building Co., Inc.
 Pinnacle 350 Lean-To with Operable Vertical Vents, (4) 5'3" x 17'4", (4) 5'3" x 29'4".
 Glazing: Lucite "Utran" UV Transmitting Acrylic.
 Finish: Clear Anodize.



Carmel Lakeside
 Carmel, IN
 Pinnacle 350 Pyramid, (1) 15'6",
 (1) 10', 4:12 Pitch. Finish: Clear Anodized.



The large atrium skylight is a Pinnacle Segmented Vault with integrated photovoltaics in the center.



Massachusetts State House
Boston, MA

Engineering Firm: Simpson Gumpertz & Heger Inc.
Customer: The Cheviot Corporation

Pinnacle 900 Segmented Vault, 30' x 109', 5.5:12 Pitch. Glazing: Photovoltaic Glass. Finish: Kynar 500 Aged Copper.

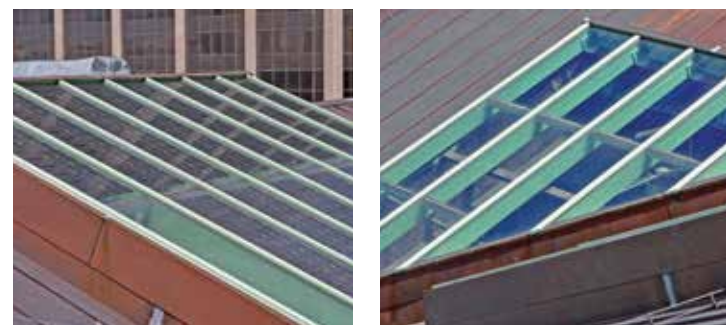
Pinnacle 600 Pyramid, 18' x 19', 5:12 Pitch. Finish: Kynar 500 Aged Copper.

Pinnacle 300 Triangular Single Pitch, 17' x 13'. Finish: Kynar 500 Aged Copper.

Pinnacle 900 Single Pitch, 28' x 19', 5:12 Pitch. Glazing: Photovoltaic Glass. Finish: Kynar 500 Aged Copper.



Non-photovoltaic Pinnacle pyramid and single pitch skylights over the stained glass ceiling in the Hall of Flags.



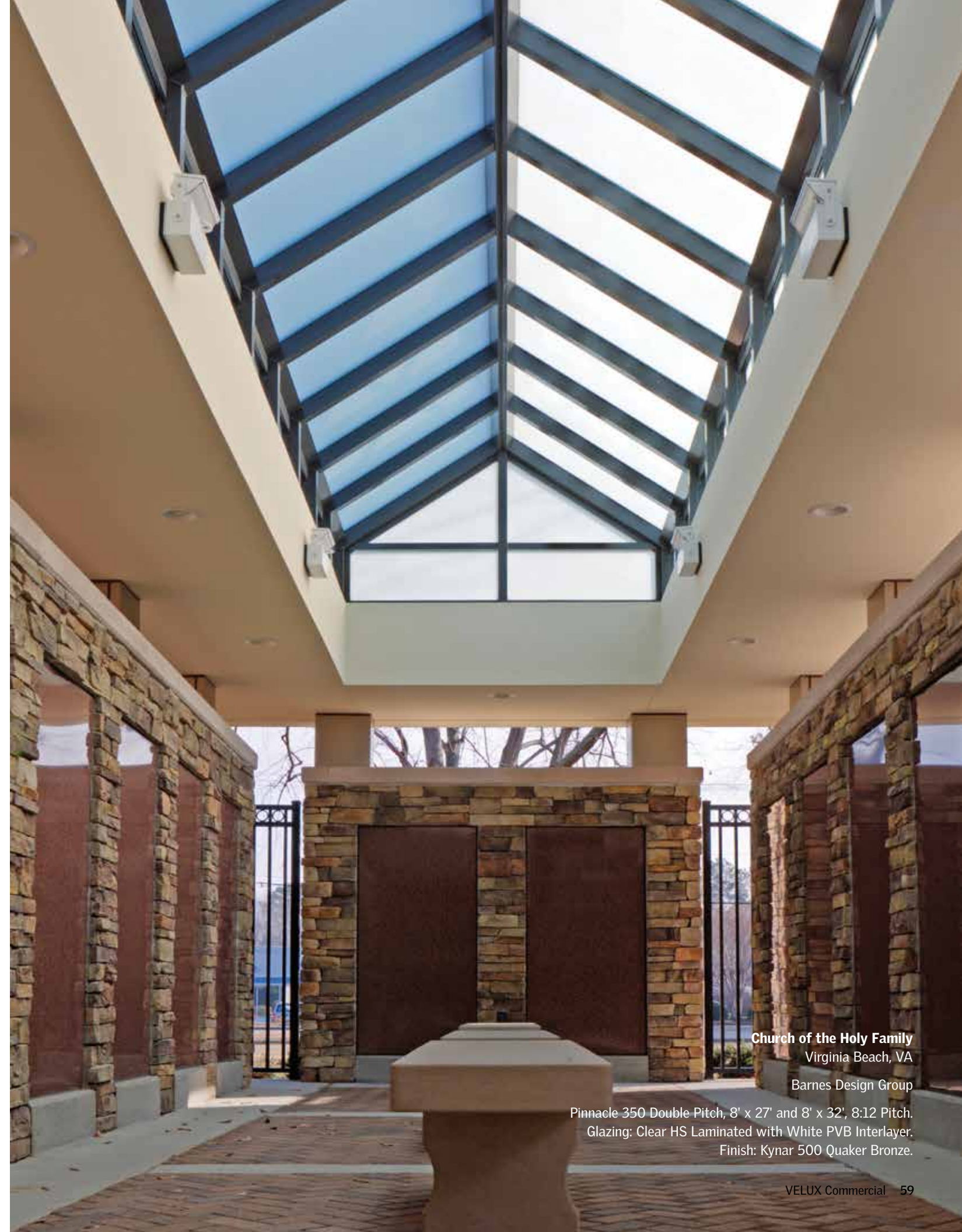
Traditional non-light transmitting photovoltaic glass was used in non-public areas.



Organization of American States
 Washington, DC
 Pinnacle 350 Double Pitch,
 55' 5" x 50' 5", 4:12 pitch.
 Finish: Kynar 500 Black.



Iona Kent County Courthouse
 Grand Rapids, MI
 Barrel Vault with Vertical Ends, (5)
 9' x 36'. Glazing: Clear Acrylic over
 25mm Clear Polycarbonate Panels
 Filled with Lumira Aerogel.
 Finish: Dark Bronze Anodize.



Church of the Holy Family
 Virginia Beach, VA
 Barnes Design Group
 Pinnacle 350 Double Pitch, 8' x 27' and 8' x 32', 8:12 Pitch.
 Glazing: Clear HS Laminated with White PVB Interlayer.
 Finish: Kynar 500 Quaker Bronze.



Railroad Museum of Pennsylvania
Strasburg, PA

The Warko Group and Zephyr Aluminum

Pinnacle 350 S-Series Single Pitch, (2) 303' x 6' 6", 3.5:12 Pitch.
Glazing: 16mm Clear Multiwall Polycarbonate. Finish: Clear Anodize.

Pinnacle 350 S-Series Structural Ridge, 303' x 13', 1:12 Pitch.
Glazing: 16mm Clear Multiwall Polycarbonate. Finish: Clear Anodize.



Canton Museum of Art
Canton, OH

Horizon S-Series Standing Seam
Polycarbonate Retrofit



City of Vallejo Library & Fire Station
Vallejo, CA

EcoSky3 Curb Mount Units,
(10) 23" x 93". Glazing: Satin Sky Acrylic
Domed over 10mm Multiwall Polycarbonate
Panels Filled with Lumira® Aerogel.
Finish: Mill.



Airports and Railway Stations

Natural light has been shown to optimize the efficiency of mass transportation workers as well as reduce stress among travelers for a more pleasant experience.





Atlantic Aviation
Houston, TX

J.R. Miller & Associates, Brea, CA

Horizon V-Series Lumiwall 40, (6) 5' x 19',
(2) 5' x 17', (6) 5' x 21', (12) 5' x 22'.
Glazing: 40mm Blue Multiwall Polycarbonate.
Finish: Clear Anodized.



**Denver International Airport,
Westin Hotel and Transit Center**
Denver, CO

Custom engineered rafter system.



Sports Facilities

Natural light not only enhances the function and beauty of sports facilities, but it also makes colors truer and increases clarity for athletes and spectators alike.





University of Houston Indoor Football Practice Facility
Houston, TX

Architect: PBK
Contractor: Harvey Construction

V-Series LumiWall 40. South Gable End: 209' Length, 10' to 32' Height; North Gable End: 209' Length, 30' to 52' Height; East/West Sides: 380' x 5'. Glazing: 40mm Opal IR Multiwall Polycarbonate. Finish: Clear Anodized.



Horseshoe Bend Swim & Tennis Club House
Roswell, GA

KW Architecture, Inc.

Pinnacle 350 Double Pitch, 11'6" x 30', 6:12 Pitch.
Glazing: Electrochromic Glass with Fully Automated Controls. Finish: Medium Bronze Anodized.



**Pinnacle National Development Center,
Children's Mercy Sports Medicine Center**
Kansas City, KS
Architect: Populous
Horizon V-Series Lumiwall 40, 97' x 14',
114' x 25'. Glazing: 40mm Opal Multiwall Polycarbonate.



Glen Oaks Club
Old Westbury, NY
Architect: Spector Group
Pinnacle 350 Lean-To, 17'4" x 5'4", 7:12 Pitch.
Finish: Quaker Bronze.

Adrian Wilson



Residential

Homes that maximize natural lighting through skylights allow homeowners to save energy and money while boosting the overall health and wellbeing of everyone inside.



© David Burroughs Photography



Arnold, MD

Architect: Alt Breeding Schwartz

Pinnacle 350 Structural Ridge, 7' x 17', 7' x 15', (2) 7' x 11', 13:12 Pitch.

Glazing: Finish: Custom Match Kynar 500 Silver.

Pinnacle 350 Double Pitch, (3) 10' x 10', 13:12 Pitch. Finish: Custom Match Kynar 500 Silver.



Dallas, TX

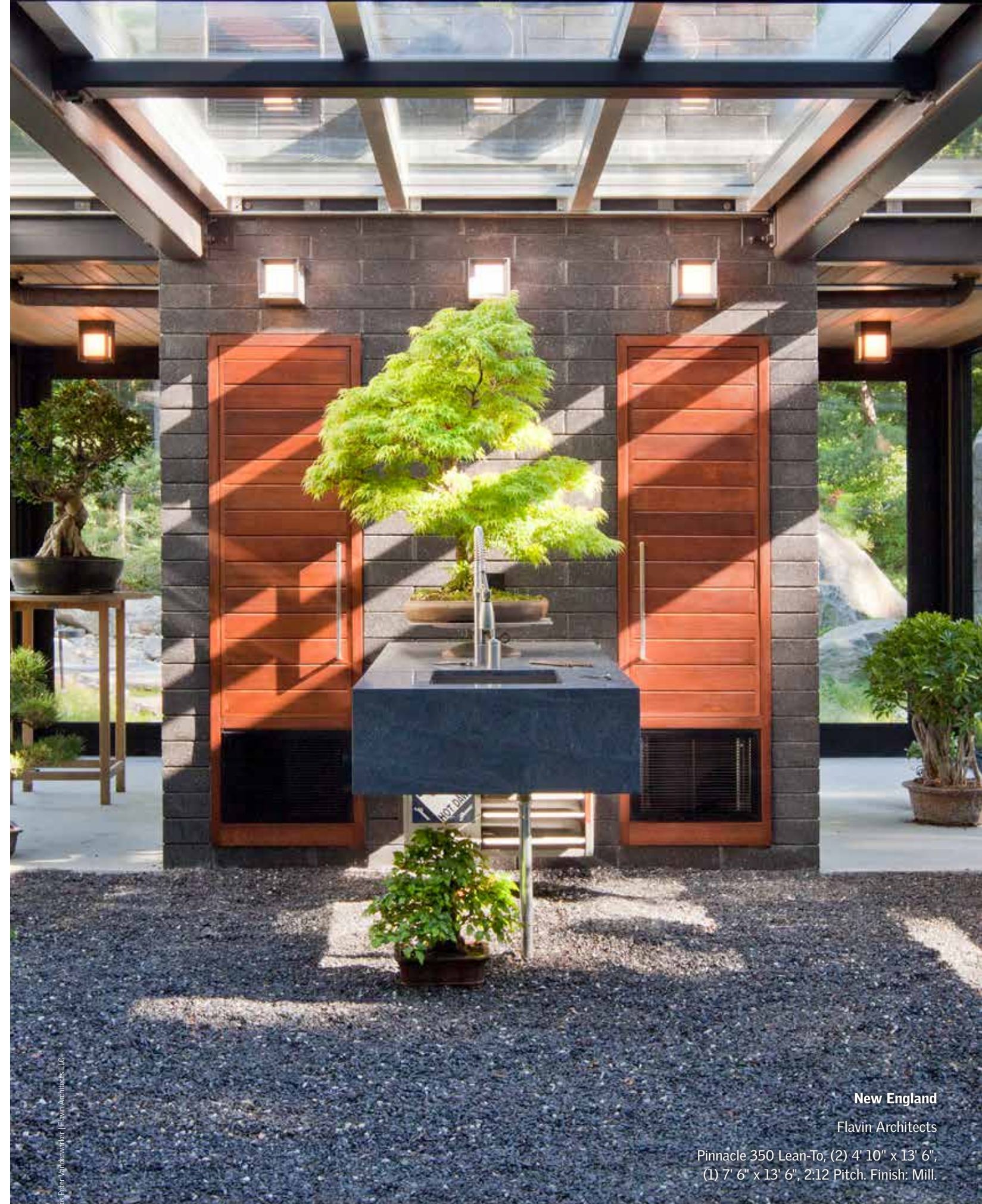
Pinnacle 600 Segmented Polygon Glass Dome, 30' 5" Diameter, 8' High. Finish: Kynar 500 Quaker Bronze Exterior, Kynar 500 Bone White Interior.



Private Residence
 Pepper Pike, OH
 Pinnacle 600 Lean-To, 12' x 20', 6:12 Pitch.
 Finish: Medium Bronze Anodized.



Chagrin Valley, OH
 Clemens Pantuso Architecture
 Classic Square Pyramid, 8' x 8', 5:12 Pitch.
 Finish: Kynar Bone White.



New England
 Flavin Architects
 Pinnacle 350 Lean-To, (2) 4' 10" x 13' 6",
 (1) 7' 6" x 13' 6", 2:12 Pitch. Finish: Mill.



Woodbridge, CT
 Triangular Shaped Low Profile System. Finish: Kynar 500 Colonial Gray.

Augusta, GA
 Hurricane Pinnacle 300 Custom Half Extended Pyramid, 10' x 22', 4:12 Pitch. Glazing: IG with Hurricane Interlayer. Finish: Kynar 500 Hartford Green with Copper Clad Exterior.



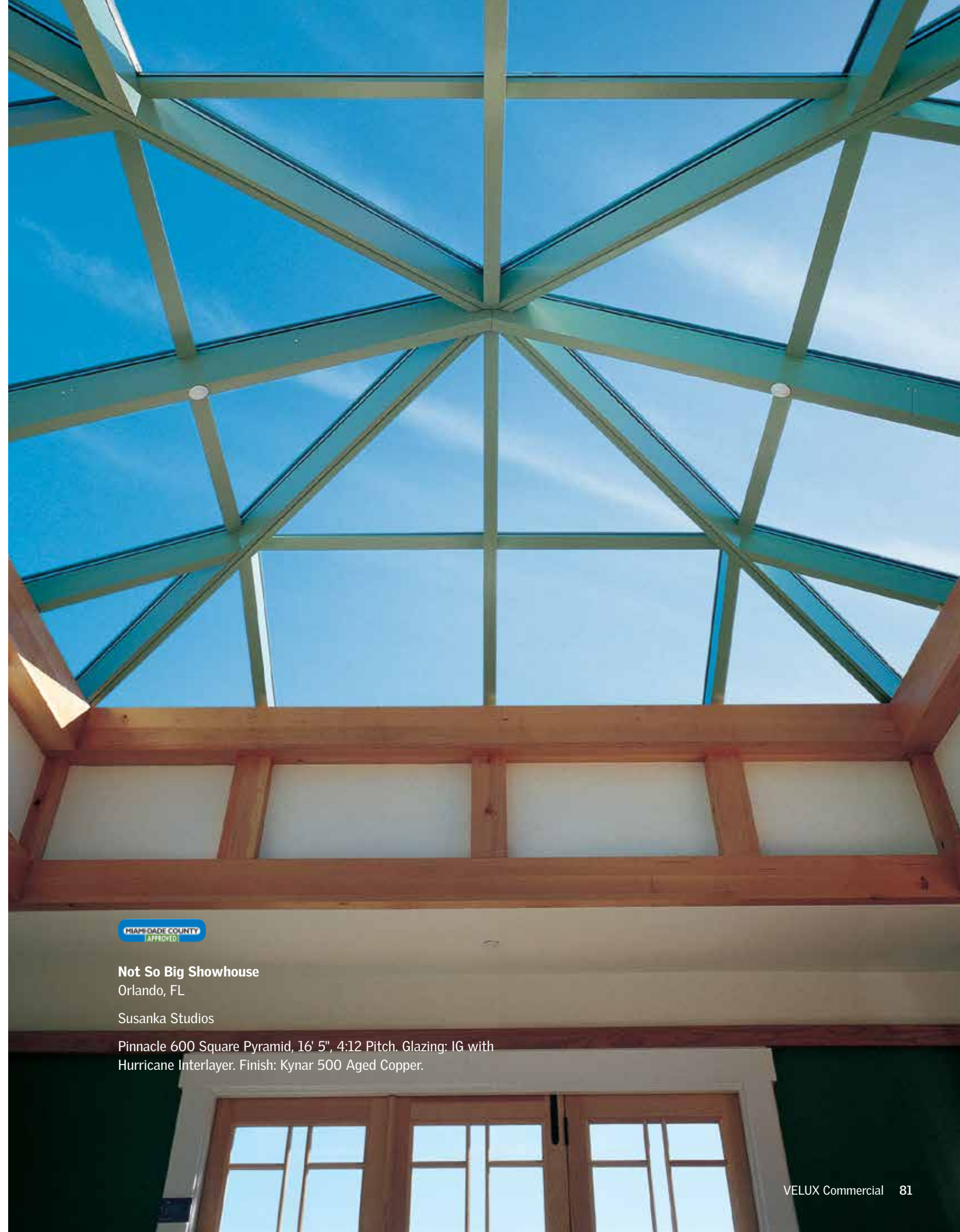
Severn, MD
 Extended Pyramid Classic Framing System, 4'9" x 12'5", 5:12 Pitch. Finish: Clear Anodized.



Englewood, NJ
 Robert Gross, AIA LEED | AP
 Low Profile Deck Mount (LPG), 14' x 4', 3:12
 Pitch. Finish: Exterior Mill, Interior Baked
 Enamel Bone White.



Boston, MA
 McNeely & Pauli Architects, Inc.
 Pinnacle 350 Extended Pyramid,
 10' x 22'. Finish: Bone White Interior,
 Copper Clad Exterior.



MIAMI-DADE COUNTY
 APPROVED

Not So Big Showhouse
 Orlando, FL
 Susanka Studios
 Pinnacle 600 Square Pyramid, 16' 5", 4:12 Pitch. Glazing: IG with
 Hurricane Interlayer. Finish: Kynar 500 Aged Copper.

VELUX America LLC
450 Old Brickyard Road
PO Box 5001
Greenwood, SC 29648-5001

commercialteam@velux.com
Tel 1-888-878-3589
Fax 1-864-941-4873

wascoskylights.com
veluxusa.com

Bringing light to life™



The VELUX Group creates better living environments with daylight and fresh air through the roof. The VELUX product program contains a wide range of roof windows and skylights, along with solutions for flat roofs. The Group also supplies many types of decoration and sun screening, roller shutters, installation products, products for remote control for installation in roofs. The VELUX Group, which has manufacturing companies in 11 countries and sales companies in just under 40 countries, represents one of the strongest brands in the global building materials sector and its products are sold in most parts of the world. The VELUX Group has about 10,000 employees and is owned by VKR Holding A/S, a limited company wholly owned by foundations and family. For more details, visit velux.com.