



ENLIGHTENED LIVING

Custom Daylighting Structures



Wasco Part of

VELUX Commercial



We'll See Your Vision Through

Wasco's line of Structural Skylighting Systems represents the industry's most versatile range of custom daylighting solutions for commercial and residential applications both large and small. When you need true custom flexibility, top quality construction, fast turnaround, long-lasting beauty, and trouble-free installation, Wasco always delivers – working closely with you to help solve problems, add aesthetic value, and make your daylighting design a stunning reality.

Wasco's metal-framed skylight structures offer virtually unlimited design possibilities for a fully customized configuration. Our Classic and Pinnacle framing systems support spans of up to 40' wide and unlimited lengths. Available with a wide choice of high performance glazing and finish options.

Table of Contents

Glazing & Finishing Options	3
METAL FRAMED SKYLIGHTS – 08 63 00	
Pinnacle Framing System	4
Classic Framing System	5
Low Profile System	6
CANOPIES – 10 73 16	
Walkway & Canopy Systems	6
TRANSLUCENT WALLS – 08 45 00	
LumiWall System	7

Glazing Options

Our metal framed custom skylighting structures are available with a virtually unlimited range of glazing options to optimize your daylighting design goals with regard to thermal performance, solar heat gain, lighting quality, impact resistance, structural requirements, aesthetics and comfort.

Our broad range of glazing choices includes, but is not limited to:

Glass – Typical glazing is insulated glass comprised of a tempered outboard lite and an annealed or heat strengthened laminated safety glass inboard lite. Custom configuration available.

Dynamic Glazing – Wasco’s Dynamic Glazing Series includes:

- Electronically Tintable SageGlass
- BIPV
- Translucent Insulated Glass
- Translucent Insulated Glass with Lumira® Aerogel



Polycarbonate – Standard glazing of 25mm multiwall polycarbonate panels in Opal, Opal IR, Clear or Bronze. Lumira® aerogel filled panels are available for greater thermal performance. Other colors and panel thicknesses are available, contact your local sales representative for more information.

Hurricane Resistant – Wasco Hurricane Rated glazing provides superior safety and security that meets Dade County HVHZ, IBC/IRC and other stringent state building codes for skylights installed in Wind Zone 3 coastal applications. Available in Pinnacle HU framing systems with 3.5" or 6" aluminum rafters. Tested to meet 80 psf design pressure, and small and large missile impact. Our Classic model CPY-FBC is Florida Product Approved / Non-Impact Zones. Glazing is available with a wide range of configurations, including our Low Profile system.



Finish Options

Wasco skylight structures are available in a broad range of colors and finishes including copper cladding:

- Mill (Standard) or Copper Clad
- Anodized: Clear, Bronze, Black
- Paint: Kynar 500® or Baked Enamel



The Pinnacle of Design Flexibility

For Spectacular Large-Scale Custom Structures Spanning up to 40', at Any Pitch You Desire Between 15° and 60°.

With its variable-pitch hinge design, the Pinnacle Systems offer you the versatility of a custom configured structural skylight system with the reliability and cost savings of standardized engineering, construction and installation. Fast on-site assembly and installation.

- Built to order from stock for shorter lead times
- Fewer parts, faster on-site assembly
- Narrow profiles provide clean lines
- Larger span capability
- Available in Hurricane Resistant

Quicker Installation

Components always assemble the same consistent way. Sills encompass the entire perimeter so installers rely less on sealants.

Leak-Resistant

Continuous sill enclosure around skylight perimeter helps reduce air infiltration through weep holes and effectively guards against water intrusion. Thermally-enhanced construction.

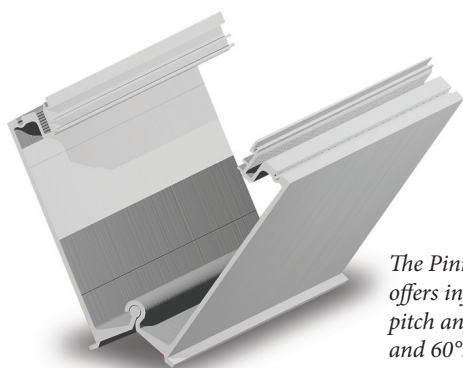
Concealed Fasteners

Through bolt fastening system further eases installation, providing a clean, aesthetically pleasing look on both the interior and exterior.

Pinnacle Model	Supports Spans Up To*	Aluminum Rafter Tube Depth
350	18' Wide	3.5"
600	30' Wide	6"
900	40' Wide	9"
HU (Hurricane Rated)	25' Wide	3.5" or 6"

**Approximate span widths depending on configuration and load. Contact your local sales representative for more information.*

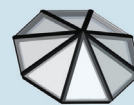
HU tested to meet 80 psf design pressure, and small and large missile impact. Available with laminated or insulated glazing.



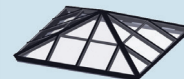
The Pinnacle hinge design offers infinitely variable pitch angles between 15° and 60°.

Pinnacle Standard Configurations

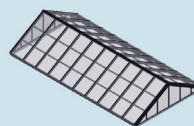
Available in unlimited lengths and custom widths.



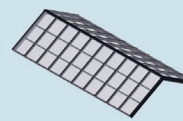
OCTAGONAL



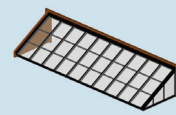
PYRAMID



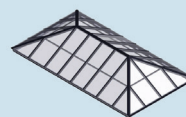
DOUBLE PITCH



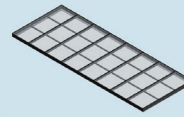
STRUCTURAL RIDGE



LEAN-TO



EXTENDED PYRAMID



SINGLE PITCH

A Classic Never Goes Out of Style

Our Light-Framed, Economical Classic Skylights for Both Pitched and Flat Roof Applications.

Wasco's light-framed Classic Skylighting System minimizes framing while maximizing daylighting. One of the industry's first light-framed systems capable of utilizing today's high performance glazings, the fully thermalized Wasco Classic structural system offers architects versatile options for dramatic, cost-effective designs.

Wasco's Classic System can ship preassembled and preglazed.¹ Classic Series skylights are fully tested for Air Infiltration and Water Penetration per ASTM E-283 and ASTM E-331. The dry glazed, OSHA compliant, fully guttered and weeped system is used with high performance glass or multiwall polycarbonate.

- Components are prefabricated for easy installation on site
- Designed for pyramids up to 8' wide and double pitch or
- Extended pyramid up to 5' or 6' wide by unlimited length²
- Versatile curb-mount design using site-built curbs for both pitched and flat roof applications
- Standard pitches available include 5:12, 7:12 and 12:12
- Concealed fasteners and narrow framing members for clean, aesthetically pleasing appearance
- Integral condensation gutters drain water to the exterior for full moisture control
- Urethane thermal break incorporated around perimeter to minimize condensation on aluminum components
- One of the industry's first light-framed skylighting systems capable of utilizing today's high performance glazings

Configuration	Supports Spans Up To ²	Aluminum Rafter Tube Depth
Square or Octagonal Pyramid	8' Wide	0.375"
Extended Pyramid	5' Wide Unlimited Length	0.375"
Double Pitch	5' Wide Unlimited Length	0.375"
CPY-FBC ³ (FBC Approved Square Pyramid)	6' 10" Wide	0.375"

¹ Maximum structure size for assembled and glazed is 6' 6".

² Approximate span widths depending on configuration and load.

³ CPY-FBC tested to meet 80 psf design pressure.

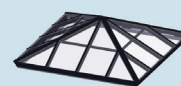


Classic square pyramid with optional copper cladding.

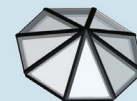


Classic Standard Configurations

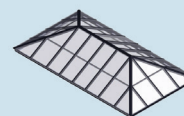
Available in unlimited lengths and custom widths.



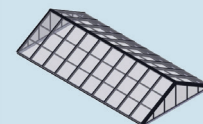
PYRAMID



OCTAGONAL



EXTENDED PYRAMID



DOUBLE PITCH

Create Dramatic Daylighting

Non-Structural Skylight on Pitched Roofs Where Structural Support Is Present.

Available with a wide choice of high performance glazing and finish options, Wasco's low profile skylight structures offer virtually unlimited design possibilities for a fully customized configuration.

Developed for pitched roof applications, the Wasco Low Profile System is an aluminum-frame glass system that lays over roof rafters, creating a narrow line frame for a clean and appealing look on the roof line. Available in curb mount or self-flashing deck mount, the system accommodates multiple panels. Thermally-broken aluminum frame ships assembled and ready for field glazing.

Typical glazing is 1/4" high performance low-e laminated glass. Also available with Hurricane glass or any of our Dynamic Glazing Series options.

- For pitched roof applications where structural support by others is provided below the skylight rafters
- Structural support is required under rafters and purlins
- Prefabricated sections are simple to assemble and glaze
- Available in self-flash style and curb mount for unlimited pitched applications
- Minimum recommended roof pitch is 3:12



Canopies

Make a Grand Entrance

Wasco Translucent Polycarbonate Canopy Systems Are An Economical Solution to Your Custom Low Slope Canopy Designs

Our multiwall polycarbonate material is lightweight, impact resistant and can be cold curved which makes it an ideal choice for commercial and industrial pavilions and walkways.

Available in various panel colors and configurations, with a 10 year system warranty, the Horizon Canopy System by Wasco is a top choice of design professionals throughout the United States.

Wasco Standing Seam Monolithic Translucent Multiwall Polycarbonate Panel Systems:

- For shelters, entrances, covered and enclosed walkways
- Fixed sill, adjustable sill or skin systems
- UV stable, high impact resistance
- Modular panel, long-span aluminum system
- Simple installation, no UV maintenance
- Pleasant natural daylight transmission



Wall to Wall Bright Ideas

40mm Translucent Multiwall Polycarbonate Vertical Panel System

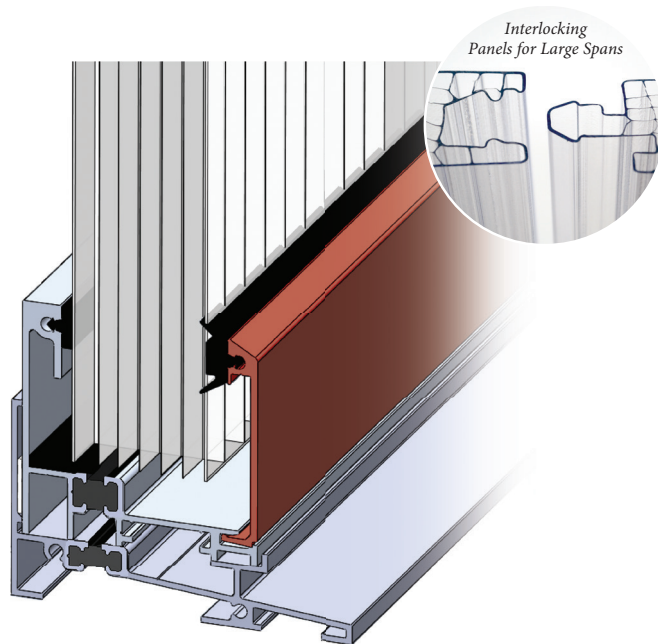
LumiWall 40 is constructed with fully fabricated, lightweight, interlocking 40mm tongue and groove multiwall polycarbonate panels. It is a dry glaze system and offers optional polyurethane thermal breaks for improved thermal performance. The system has large span capabilities and is easily installed by commercial contractors.

LumiWall 40 has a coextruded layer of UV inhibitor that requires no maintenance. Polycarbonate is not made of fibers that will deteriorate, which allows it to maintain its shape, color, and strength even when exposed to UV light.

LumiWall 40 delivers superior light transmission, high impact resistance,¹ and low U-values, all at an affordable price. Available with a wide range of color choices.²

Features

- Dry Glaze System – No Sealants Required On Panels
- Fully Fabricated, Lightweight Interlocking Wall Panel System with Large Span Capabilities
- Superior U-value, Light Transmission, SHGC, Impact Resistance¹
- System Depth: 2¾" Panel Frame, 4" Subsill
- Standard Subsill for Trouble Free Installation
- Sloped Sill Nose with Recessed Weeps for Maximum Drainage
- Available with or without Polyurethane Thermal Breaks for Improved Thermal Performance
- Factory Finishes Meeting All AAMA Finish Standards
- No Exposed Fasteners
- NFRC Tested, 10 Year Warranty

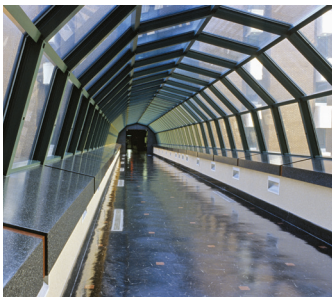


¹ Clear, Opal and Opal IR are stocked. Other glazing options available, contact your local sales representative for more information. ² Compared to leading competitor.



Unit Skylights (08 62 00)

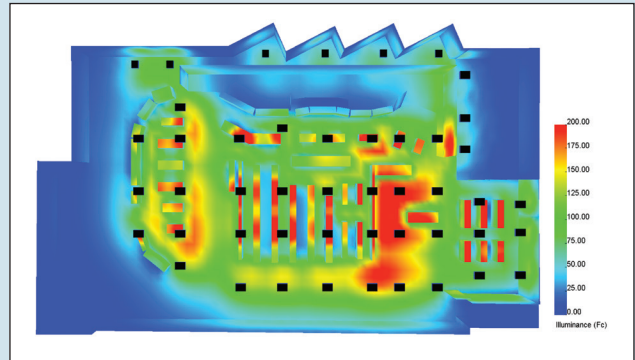
- Energy Efficient EcoSky3 Model is IECC 2018 Compliant in All Climate Zones, NFRC Certified
- Domed, Pyramid, Barrel Vault, Circular or Cluster Configurations with Plastic or Glass Glazing
- Blast Resistant, Hurricane Rated, Prismatic, Fall Protection, and ESRF Rated Smoke Vents
- Available with Lumira® Aerogel Panels
- Prefabricated Curbs and Safety Screens Available



Walkway & Canopy Systems (10 73 16)

- Glazing Options Include Glass, Acrylic, Polycarbonate and Structured Translucent Sheeting
- Quick On-Site Assembly and Installation of Custom Structural Components
- Concealed Fasteners for Easy Installation and Pleasing Look

Daylight & Energy Analysis



Modeling tools to capture best energy benefits and optimum results.

Wasco offers daylighting and energy modeling services to aid in the prediction of the total amount and distribution of incident light in an environment due to the introduction of natural light. This analysis can also aid in design of a day lit space.

- Consider overall costs for best results
- Energy Analysis will predict the energy losses and savings in a given building due to the addition of skylights
- Skylights in conjunction with lighting controls is the key to maximize your energy savings
- Tools available include AGI32, SkyCalc, Jupiter, and eQuest



Translucent Daylighting Model



Completed Project

SAFETY CONSIDERATIONS

Skylights pose an inherent risk of injury or death from fall throughs, and the safety of others is of the utmost importance to VELUX. VELUX recommends that the customer, building owner or manager use additional protection with the skylight such as an exterior or interior safety cage, to enhance long-term safety. The building owner or manager is responsible for providing fall protection around the skylight in accordance with OSHA regulations. VELUX also recommends that the building owner or manager restrict roof access only to personnel who have been cautioned as to the location of the skylights, and warned not to sit, step or walk on the skylights.

Wasco Part of



85 Spencer Dr, Unit A
Wells, ME 04090

800-688-3589
csm.wells@velux.com

wascoskylights.com
veluxusa.com